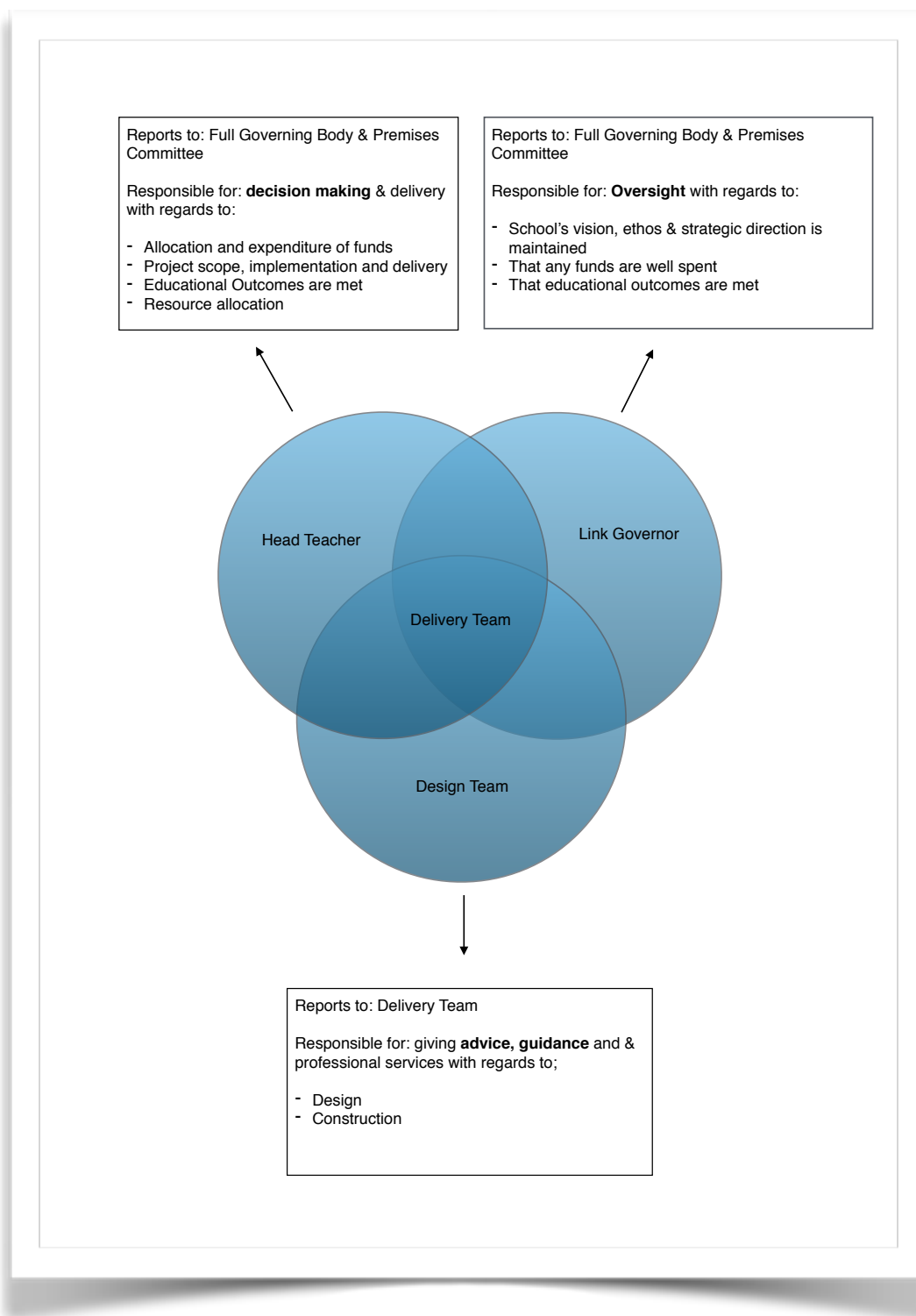


Delivering the Vision



The Delivery Team

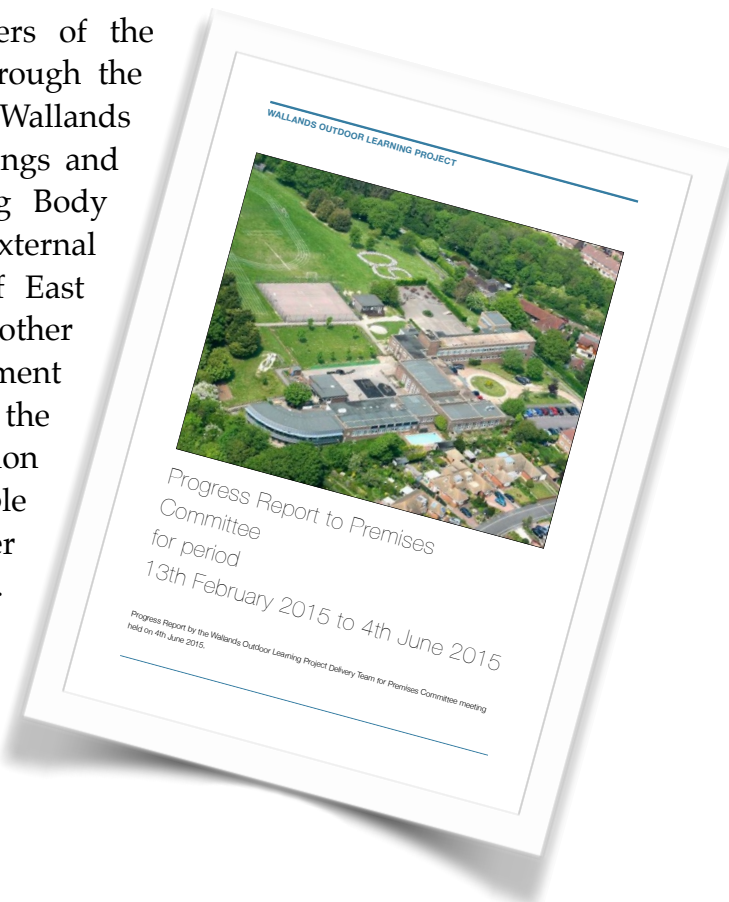
Having completed the Feasibility Report, the Grounds Project Team work was finished and a small delivery team established to take the now Outdoor Learning Project forward. The Delivery Team consists of three members each with distinct responsibilities.



A Readiness to Deliver

The Delivery Team have a number of key responsibilities including engaging with key stakeholders at regular and key points during the project, commissioning professional work from the design team and obtaining fundraising for the project. The Delivery Team meet on a monthly basis during term time.

In terms of stakeholder engagement members of the Delivery Team meet regularly with pupils through the School Council, parents through the Friends of Wallands PTA, staff through inset days and staff meetings and Governors at committee and Full Governing Body meetings. There are also meetings with external stakeholders principally staff and Officers of East Sussex County Council, but including other community organisations and groups. Engagement is both proactive and informative, in the case of the former obtaining feedback through consultation on specific elements of the project, for example the Feasibility Report, and with regards the latter providing regular updates on project progress. Consultation is an exceptionally important and valuable part of the project, this website is just such an example, the outcome of consultation with parents!



A long term plan

In November 2014 the Delivery Team commissioned a Scope of Works and a high level Cost Plan for the whole project. Reporting in January 2015 it was agreed that the Masterplan be delivered over the long term in five phases, the delivery of each phase would be wholly dependent on funding being available. Therefore each phase would become a bespoke project within its own right, with its own plan, stakeholder engagement and fundraising strategy. The phasing also took into account feedback from consultation with pupils, parents and staff.



The Five Phases

Phase 1

- Habitat
*improving biodiversity by planting indigenous species and encouraging new wildlife.
developing a range of new outdoor learning and play experiences for pupils.*

- Relocation of the Speech & Language Unit Portakbin
commissioning professional services to design, plan and deliver necessary structural works to integrate Unit into main school buildings.

Phase 2

- Removal of existing games court and introduction of new Multi Use Games Area.

- Construction of new outdoor performance area.

Phase 3

- Remodelling of school entrance, car parking and footways.

- Develop outdoor learning space for relocated Speech and Language Unit.

Phase 4

- Remodel hard play area to introduce new playground spaces.

- Remodelled Infant entrance.

- Develop infant outdoor learning space.

Phase 5

- Develop nursery and reception outdoor learning spaces.

- Remodelled nursery and reception entrances.

A Flexible Approach

This phased approach reflects the long term nature of the project, and recognises that access to funding, fluctuating costs, changing priorities both internal and external may require a revision to the current plans. However by adopting a clear vision, a long term strategic approach and a costed, phased but flexible delivery plan with continued stakeholder involvement and support, Wallands are ready to deliver on their vision of outdoor learning.

For updates on the progress of the project and the latest developments please refer to the 'Latest News' section of this website.